

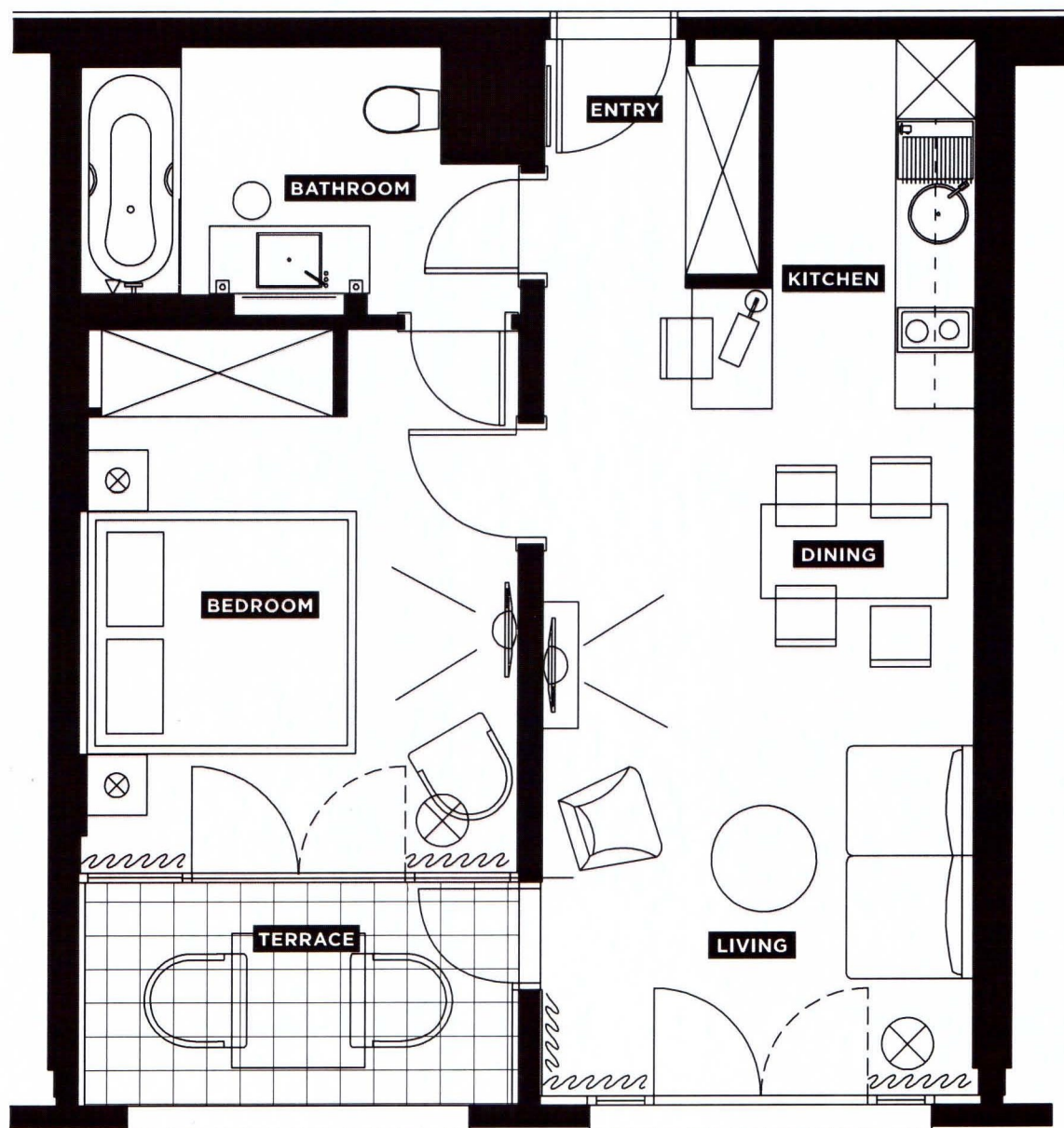
Apartment 5307	Apartment 5103
Size 43,80 m2 plus terrace	Size 52,21 m2 plus terrace
Bedrooms One	Bedrooms One
Floor plan A1 type 1	Floor plan A1 type 5
View Garden view	View Garden view first line
Apartment 5202	Apartment 5506, 5508
Size 58,47 m2 plus terrace	Size 60,00 m2 plus terrace
Bedrooms One	Floor Top floor (Penthouse)
Floor plan A1 type 7	Bedrooms One
View Sea view	Floor plan A1 type 12
	View Panorama sea view
Apartment 5606, 5607	Apartment 5408
Size 60,00 m2 plus terrace	Size 63,87 m2 plus terrace
Floor Top floor (Penthouse)	Floor Fourth
Bedrooms One	Bedrooms One
Floor plan A1 type 12	Floor plan A1 type 9
View Panorama sea view	View Sea view
Apartment 5406	Apartment 5411
Size 65,97 m2 plus terrace	Size 67,34 m2 plus terrace
Floor Fourth	Floor Fourth
Bedrooms One	Bedrooms One
Floor plan A1 type 11	Floor plan A1 type 13
View Sea view	View Sea view
Apartment 5201	Apartment 5507
Size 70,67 m2 plus terrace	Size 77,37 m2 plus terrace
Bedrooms Two (one double, one single)	Bedrooms Two
Floor plan A2 type 3	Floor plan A2 type 2
View Sea view	View Sea view
Apartment 5303, 5311	Apartment 5505, 5510
Size 98,54 m2 plus terrace	Size 111,01 m2 plus terrace
Bedrooms Two	Bedrooms Two
Floorplan A2 type 4	Floor plan A3 type 1
View Panorama sea view	View Panorama sea view



THE RESIDENCES AT DUBROVNIK
SUN GARDENS

ONE BEDROOM

A1 - TYPE 1



RESIDENCE SIZE: 44 square metres

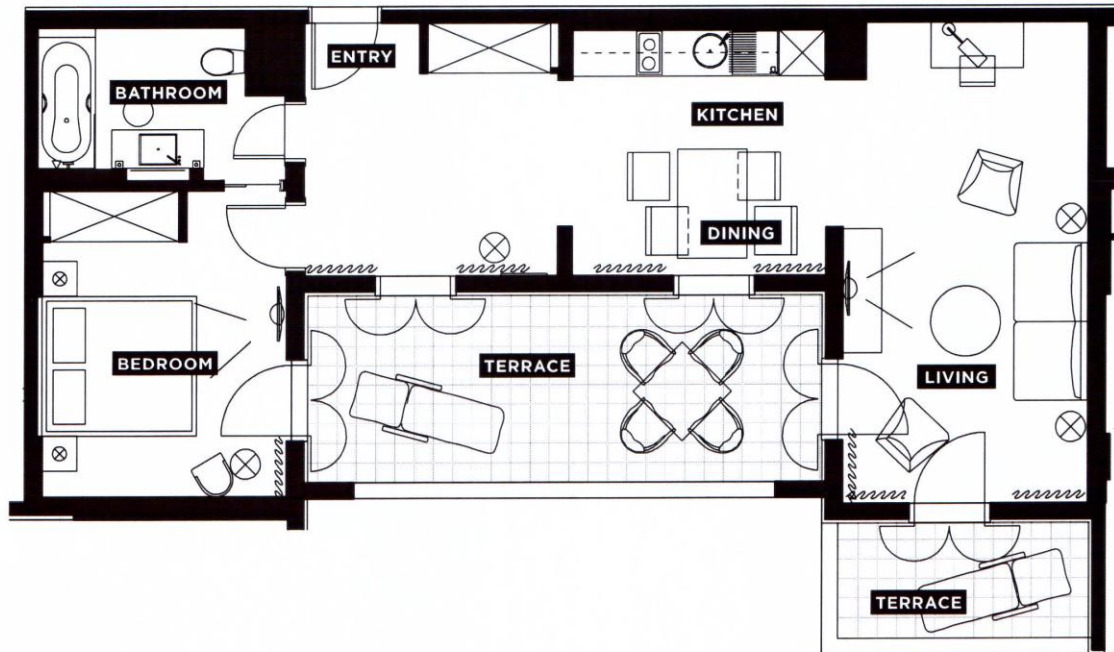
Whilst efforts have been made to ensure the accuracy of the floorplan shown, all measurements, positioning, fixtures, fittings and any other data shown are an approximate interpretation for illustrative purposes only and are not to scale. Certain details are subject to change. No responsibility is taken for any error, omission, misstatement or use of data shown. For further information please contact an authorised Residences at Dubrovnik Sun Gardens sales representative.



THE RESIDENCES AT DUBROVNIK
SUN GARDENS

ONE BEDROOM

A1 - TYPE 12



RESIDENCE SIZE: 60 square metres

Whilst efforts have been made to ensure the accuracy of the floorplan shown, all measurements, positioning, fixtures, fittings and any other data shown are an approximate interpretation for illustrative purposes only and are not to scale. Certain details are subject to change. No responsibility is taken for any error, omission, misstatement or use of data shown. For further information please contact an authorised Residences at Dubrovnik Sun Gardens sales representative.



THE RESIDENCES AT DUBROVNIK
SUN GARDENS

TWO BEDROOM

A3 - TYPE 1



RESIDENCE SIZE: 111 square metres

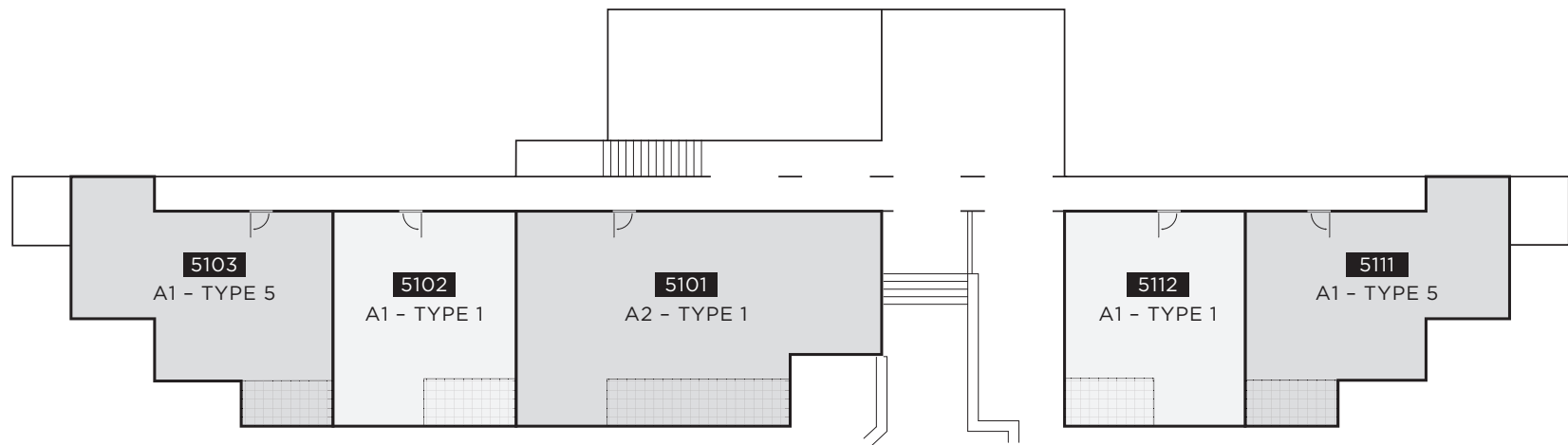
Whilst efforts have been made to ensure the accuracy of the floorplan shown, all measurements, positioning, fixtures, fittings and any other data shown are an approximate interpretation for illustrative purposes only and are not to scale. Certain details are subject to change. No responsibility is taken for any error, omission, misstatement or use of data shown. For further information please contact an authorised Residences at Dubrovnik Sun Gardens sales representative.



THE RESIDENCES AT DUBROVNIK
SUN GARDENS

BUILDING FIVE

FLOOR 01

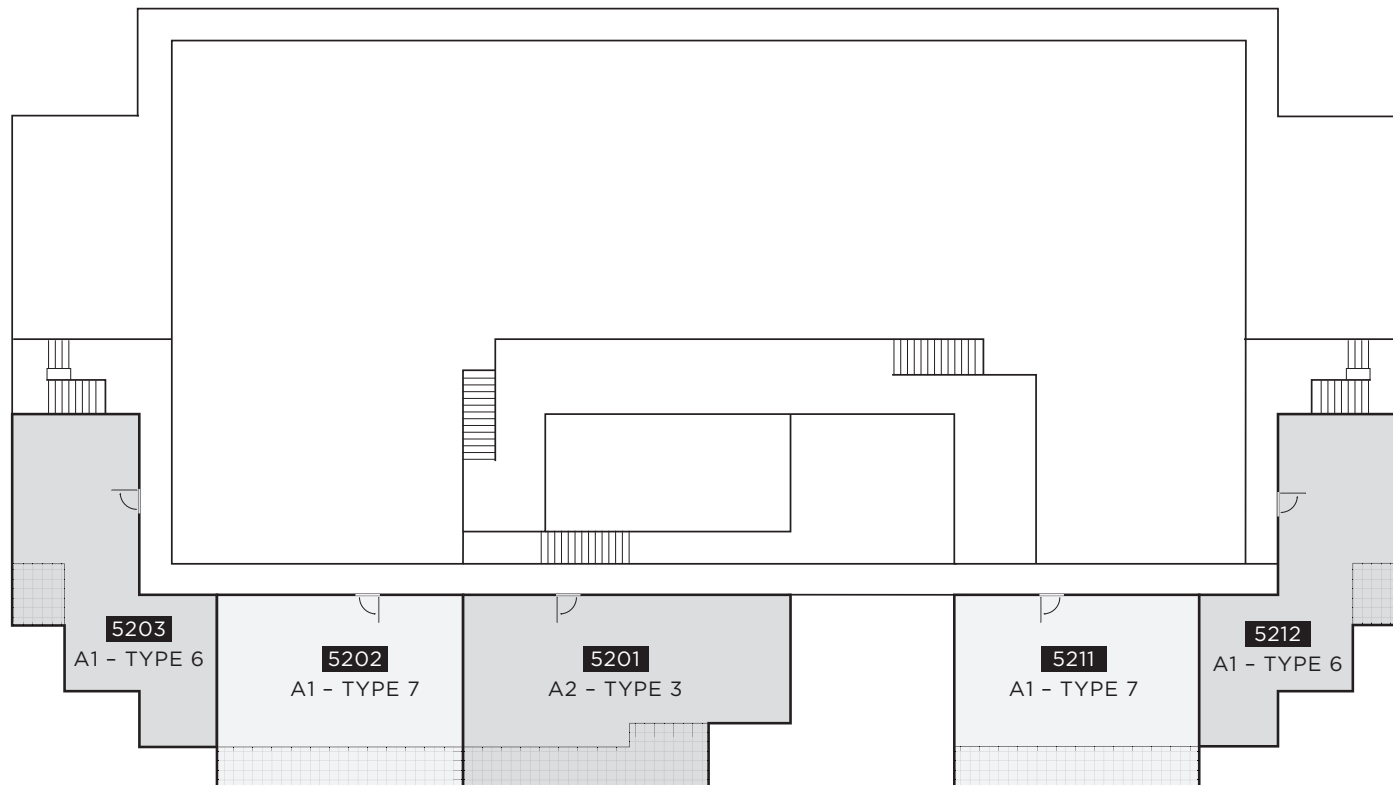




THE RESIDENCES AT DUBROVNIK
SUN GARDENS

BUILDING FIVE

FLOOR 02

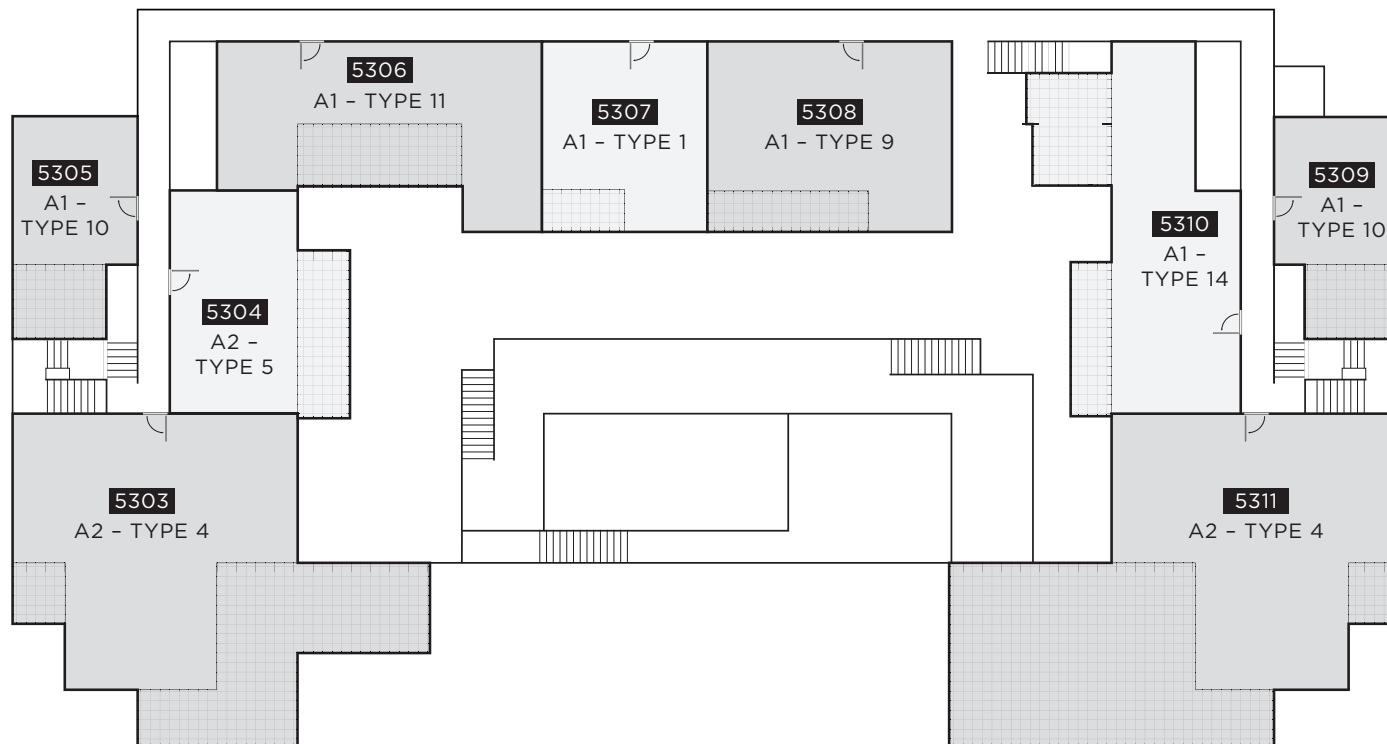




THE RESIDENCES AT DUBROVNIK
SUN GARDENS

BUILDING FIVE

FLOOR 03

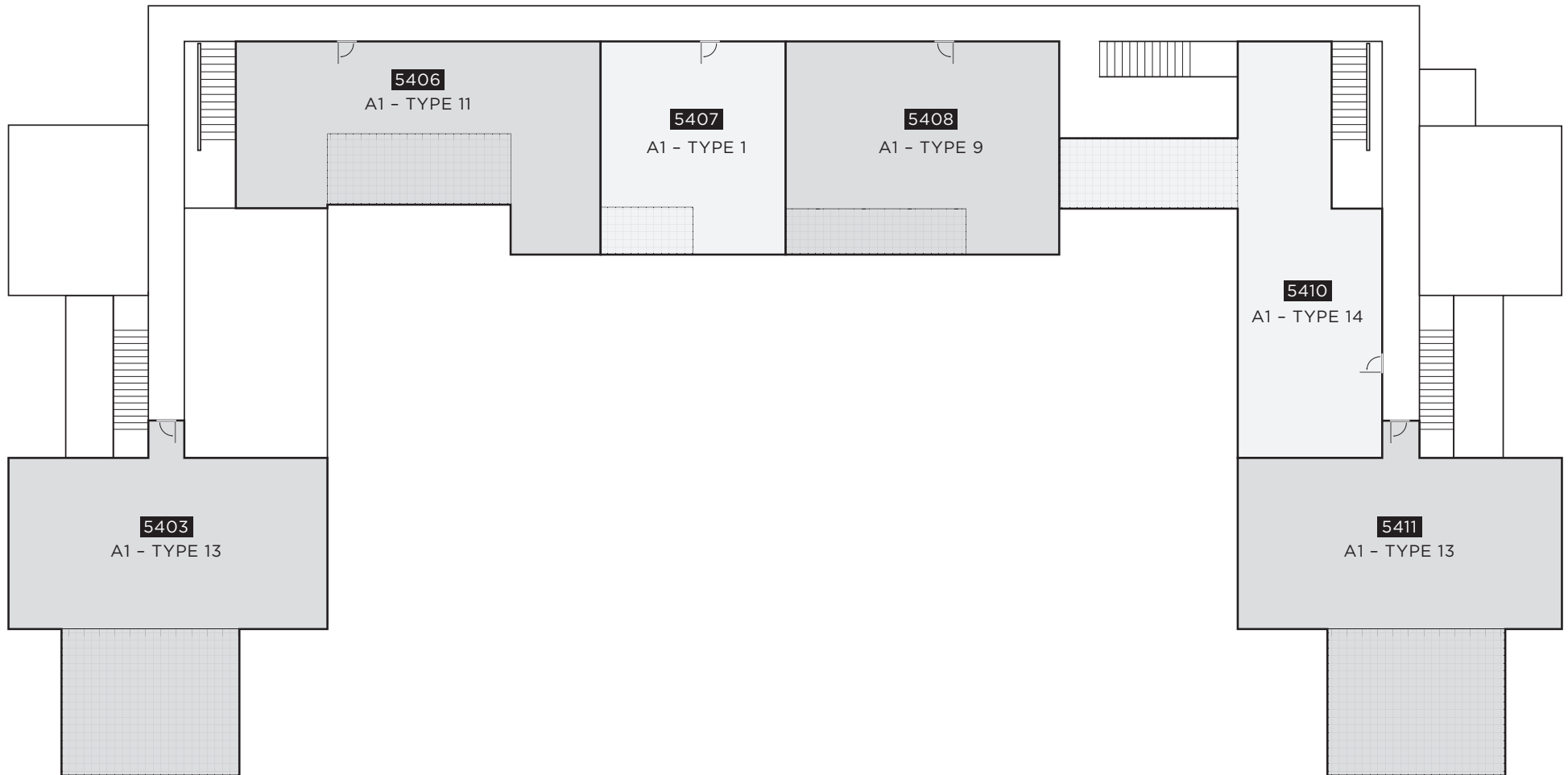




THE RESIDENCES AT DUBROVNIK
SUN GARDENS

BUILDING FIVE

FLOOR 04



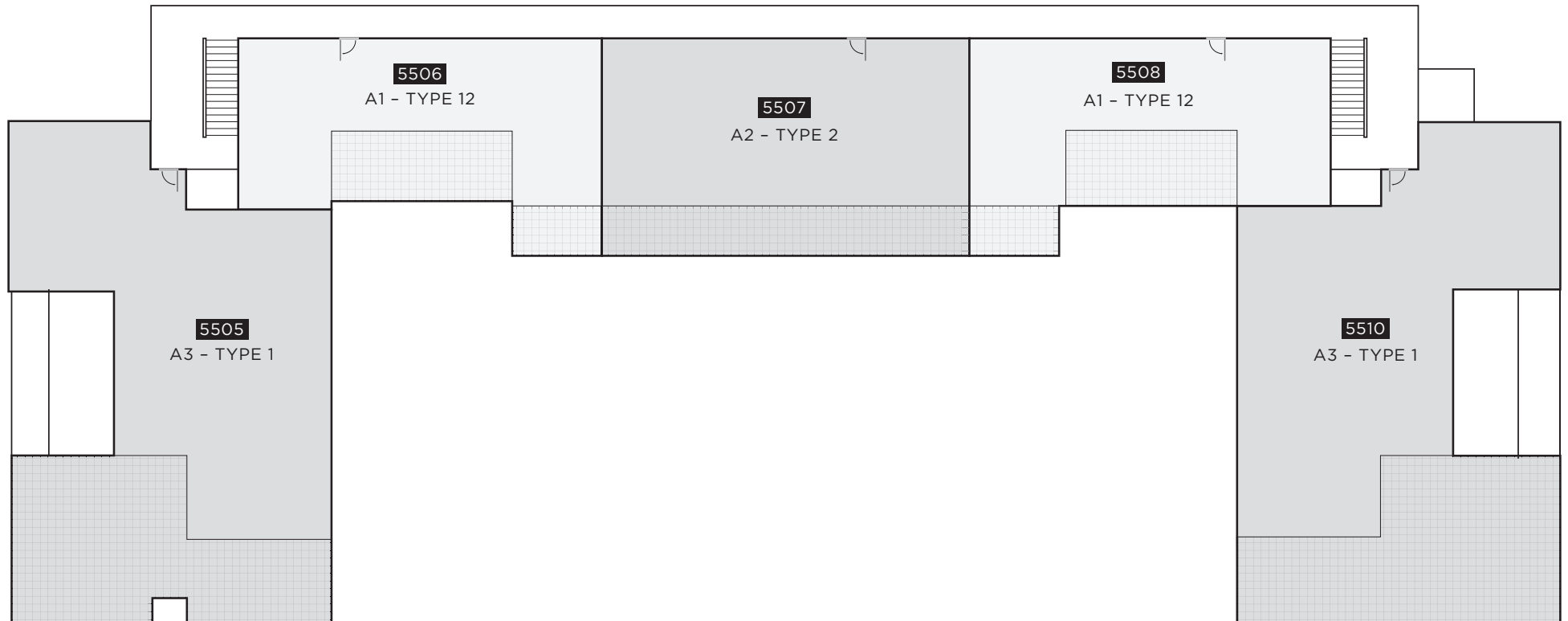
Whilst efforts have been made to ensure the accuracy of the floorplan shown, all measurements, positioning, fixtures, fittings and any other data shown are an approximate interpretation for illustrative purposes only and are not to scale. Certain details are subject to change. No responsibility is taken for any error, omission, misstatement or use of data shown. For further information please contact an authorised Residences at Dubrovnik Sun Gardens sales representative.



THE RESIDENCES AT DUBROVNIK
SUN GARDENS

BUILDING FIVE

FLOOR 05





THE RESIDENCES AT DUBROVNIK
SUN GARDENS

BUILDING FIVE

FLOOR 06

